



Hydrogeology and Water Quality Assessment of the Middle Aquiferous Horizon of Onitsha and Environs in Anambra Basin, Eastern Nigeria

Moses I. Isikhueme¹ and Osakpolor Marvellous Omorogieva^{1*}

¹Department of Geology, Faculty of Physical Sciences, University of Benin, Benin City, Nigeria.

Authors' contributions

This work was carried out in collaboration among the authors. The authors read and approved the final manuscript.

Article Information

DOI: 10.9734/BJAST/2015/16279

Editor(s):

- (1) Abida Farooqi, Department of Environmental Sciences, Quaid-i-Azam University, Pakistan.
(2) Singiresu S. Rao, Prof. at Department of Mechanical and Aerospace Engineering, University of Miami, Coral Gables, USA.

Reviewers:

- (1) Anonymous, University of the Free State, South Africa.
(2) Saad Bakkali, Earth Sciences Department, A. Essaâdi University, Morocco.
(3) Vijai Singhal, Rajasthan State Pollution Control Board, India.

Complete Peer review History: <http://www.sciencedomain.org/review-history.php?iid=1140&id=5&aid=9555>

Original Research Article

Received 21st January 2015
Accepted 14th April 2015
Published 2nd June 2015

ABSTRACT

Onitsha is a commercial, ecclesiastical and administrative city located on 6°49'30"E and 6°8'30"N in South-Eastern Nigeria with a high population density. The study area is close to a confluence and occupies a landmass of 300 km² and geologically belongs to the Ameki group in Anambra basin. The lithology of ten (10) wells labeled W₅, W₇, W₉, W₁₂, W₁₆, W₂₀, W₂₁, W₂₂, W₂₃, and W₂₄ were obtained from which a geologic fenced diagram was generated; four aquiferous horizons were detected which range from shallow (15-24 m), upper (30-32 m), middle (<90 m) and the deep (>90 m). The study revealed that the flow direction of the groundwater is multidirectional which was influenced by the piezometric heights; the study also revealed that there is a depression (sinkhole) at the middle aquifer occasioned by the massive extraction of groundwater from the aquifer; this is as result of the population density of the study area with several functional boreholes tapping its water from the middle aquifer on an hourly basis. Biogeochemical analyses were carried out on the groundwater from these wells and the result obtained when compared to WHO standard shows that the water was severely polluted particularly with coli form count, for example the an average of 14.7 total coli form count was recorded against 0

*Corresponding author: E-mail: marvellousdegreat@yahoo.com, sesbet@gmail.com;

recommended by WHO. The cations and the anions were analyzed using acceptable method such as American Public Health Association, Allem et al; 1974 and Adeleke and Abegunde 2011, while the heavy metals were analyzed with AAS model PYE Unicam SP 2900. The pH value of the groundwater was found to range between (6.5–7.05); other parameters measured include total hardness (TH), total dissolve solid (TDS), Electrical Conductivity (EC) and alkalinity has the following range of values (64–120 mg/l), (10–40 mg/l), (71–109 s/cm) and (56–220 mg/l) respectively. The cations and anions were obtained as follows; Ca^{2+} (1.46–8.62 mg/l), Mg^{2+} (0.72–2.57 mg/l), Cl^- (153.8–449.7 mg/l), PO_4^{2-} (7.5-61.5 mg/l) and NO_3^- (6-21.6 mg/l). The heavy metals includes; Fe (0.27-0.65 mg/l), Zn (0.04-1.16 mg/l), Mn (0.03-0.52 mg/l) and Ba (0.02-0.26 mg/l). The Chemistry of the water was traced to anthropogenic activities due to high chloride and heavy metals measured; this is influenced by the countless number of septic tanks, open dumpsite, battery manufacturing companies, and effluent from pharmaceuticals and textiles industries amongst others present in the area. The authors recommend that drillers and borehole contractors should therefore drill deep into the deeper aquifer that is capped with clay/shale body for potable water while the water from the middle aquiferous horizon should be well treated before consumption by applying Adsorption and Osmosis filter method etc.

Keywords: Onitsha; Anambra basin; groundwater; WHO and analysis.

1. INTRODUCTION

The study area was found about 1680, has been a center of commercial activities, an ecclesiastical and administrative center [1]. Onitsha and its environs constitute one rapidly urbanizing region. The urbanization process was correctly anticipated by [2], while investigating and modeling the urban sprawl pattern of Onitsha. Onitsha and Environs lie within the Nkisi-Idemili water shed and covers an area of about 300 km² within coordinate points 6°8'30"N and 6°49'30"E as shown in (Fig 1). The elevation of the study area range between 32 m above sea level from the East to the Coastal portion of River-Niger to about 100 m above sea level from the central half to Eastern extremity. The area is drained by Anambra, Nkisi and Idemili Rivers all of which discharge into the River Niger. The sediments originated from the Cameroon massif and Abakilike anticlinoria and range from Campanian to Recent [3,4].

According to [5], Onitsha falls within the tropics with mean annual temperature range of 22°C – 27°C and mean annual rainfall between 1,500 mm-2,500 mm characterize by two distinct seasons; wet and dry with average monthly rainfall of 2000 mm. The wet season range between the month of April to October while the dry season is between November and March. The area of study covers basically Onitsha North, Onitsha South, Nkpor, Obosi and Iyiowa Odekpe. The total population of the study area according to 1991 census was 428,272 (four hundred and

twenty eight thousand two hundred and twenty seven), while 2006 census put it at 512,939 (five hundred and twelve thousand nine hundred and thirty nine) with 19.77% increase according to the "Official Gazette of Nigeria government" [6,7] Table 1.

Several researchers have worked on the quality of the ground water in the shallow, upper and deep aquiferous horizons in the study area but little or nothing have been said about the hydrogeology and hydrogeochemistry of the middle aquifer. For example, [8] worked on the biophysiochemical characteristics of the deep aquifer at Onitsha and its environs. A wide spread of contaminates associated with groundwater at Onitsha was dealt with by [9] while [10,11] worked on the unconfined shallow aquifer in the study area. Groundwater resources are dynamic in nature and are noted to be the largest source of fresh water as a result, monitoring and conserving it becomes imperative [12]. In the last decade or more, the government of Nigeria has partially realized the significance of water resources and the need to develop it [13]. Hydrological models have been employ as a tool to explain the interrelation of the various hydrological phenomena and in the process solve hydrological and water resource problem. Nigeria depends largely on groundwater supply but yet not attracting attention it deserve [14].

Geologically, Onitsha metropolis is majorly underlain by the Ameki group which consists of Nanka sands, Nsugbe Sandstone and Ameki Formaiton FM [15].

The present study is focused on the hydrogeology and Chemistry of the middle aquiferous horizon using the fenced diagram as a model to reveal the stratigraphy and hydrogeology while the biophysicochemical analysis is to characterize the water quality of Onitsha and its environs. This became imperative due to the high demand in groundwater exploitation and water quality monitoring; this will help researchers, government, borehole contractors and other stakeholder to understand the hydrogeochemistry of the study area consequently contribute to sustainable development.

2. MATERIALS AND METHODS

The study area falls within $6^{\circ}49'30''E$ and $6^{\circ}8'30''N$ and geologically belong to the Ameki group [15], (Fig. 1) shows the location and geological map of the study area. Field survey was carried out using global positioning system (GPS). Litho log, from ten(10) wells (Fig.1) constructed by experienced hydrogeologist with distance apart as presented in (Fig.1), the wells were labeled W_5 , W_7 , W_9 , W_{12} , W_{16} , W_{20} , W_{21} , W_{22} , W_{23} , and W_{24} from which geologic fenced diagram (3D diagram) showing the subsurface stratigraphy was drawn (Fig. 3). Water samples from the ten (10) wells were collected and tested for coli form count, cations, anions and heavy metals. Acceptable methods according to [16-18] were used to determine the coli form count, cations and anions while the heavy metals was determine with atomic absorption spectrometer (AAS) model PYE uncam SP 2900.

3. RESULTS AND DISCUSSION

Fig. 4 shows the hydro-geological section across the study area while (Fig. 2) shows stratigraphic (Litho log) and piezometric water surfaces of the study area. A quick look at (Fig. 4) shows that the area of study is overlain by lateric soil with variable thickness which is then underlain with a thick coarse sandy horizon with lenses of medium shale to medium sand occurring with the coarse sand. The thickness of the coarse sand range between 8 – 27m. The figure also shows that the coarse sand horizon is underlain with

clay with thickness of six (6) metres at Awada Plastic industrial area to twenty three (23) metres at Nkpor. Below the shale and sand horizon at about 102 metres is the top of a medium grained sand zone which is the main aquifer which varies in thickness from twenty three (23) metres at Obosi to more than ninety two (92) metres at Nkpor. The aquifer is prolific and extends from the main market-GRA- inland Town, - Akwa Road- Nkpor and Obosi. The geologic fenced diagram is shown in (Fig. 3). The diagram shows the subsurface stratigraphy and the various aquiferous horizons from unconfined, semi-confined to confined in the region. At the base of the unconfined aquifer lie the semi-confined and the confined upper, middle and deep aquiferous horizons made up of sandstone within the Ameki Formation (FM). The groundwater flow direction in the middle aquifer is presented in (Fig. 5); it shows multidirectional flow that is superimposed on the regional southwest flow direction. The diagram revealed that there is a sinkhole or depression occasion by groundwater extraction within and around the densely populated area such as Okpoko, Fegge, Housing Estate and Main Market area. When groundwater is pumped from an aquifer, the rate at which water flows in from the surrounding rock to replace that which is extracted is generally slower than the rate at which water is taken out [19]. When this happen, a cone of depression can likewise develop in potentiometric surfaces consequently lower the regional water table. Another consequence of lowering the water table is that the surrounding rocks can no longer hold water due to compaction by the weight of the overlying rocks; this decrease their porosity, permanently reducing their water holding capacity and may also decrease their permeability. At the same time, as the rocks below compact and settle, the ground surface itself may subside. It is imperative to state that lowering of the water table or the potentiometric surface also may contribute to sinkhole formation [19] which is the case of the study area, this assertion was also supported by [6,20,21,19]. From the foregoing, there is a possibility of mass movement leading to land slide within a geological time frame due to soil instability and the lowering of water table. The values for the static water level and hydraulic head in metres with their coordinate in the area of study are shown in (Table 3).

Table 1. Population figures of the study area (after Ezemeodo and Igbokwe, 2013 [23])

S/N	Names of areas	1991 Population	2006 Population
1.	Onitsha North	121,157	124,942
2.	Onitsha South	135,290	136,662
3.	Nkpor	64,732	94,697
4.	Obosi	85,249	124,699
5.	Iyiowa Odekpe	21,844	31,939

Source: Official Gazette of Nigerian government (FGP71/52007/2,500(OL24)

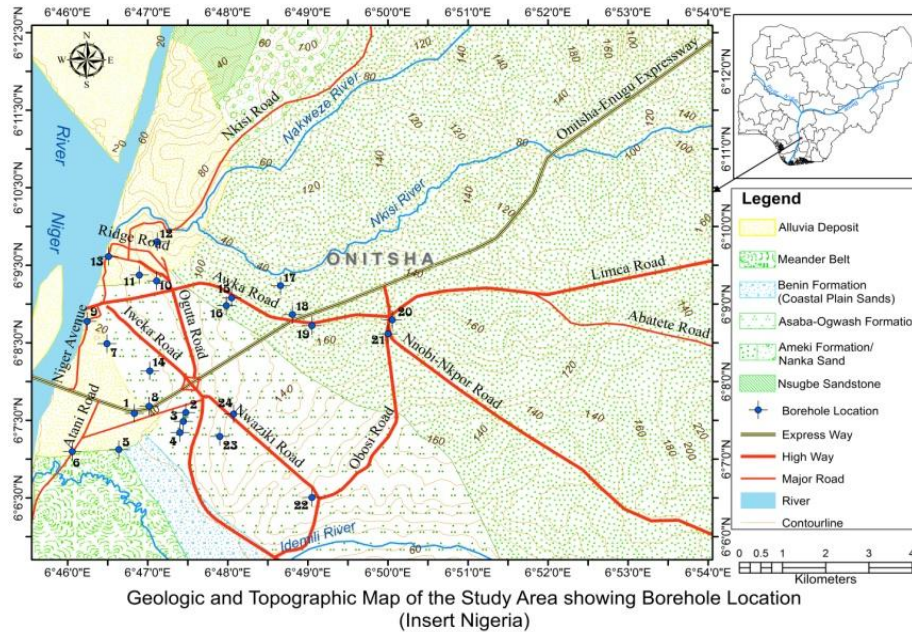


Fig. 1. Location and geologic map of Onitsha and environs

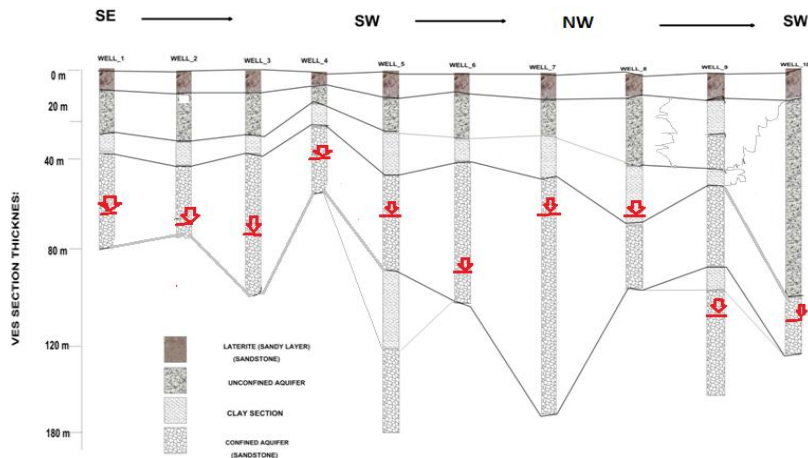


Fig. 2. Litho log of the wells and their piezometric heights

Geochemical and bacteriological analysis of the water samples shows a high concentration of almost all the parameters that were analyzed for (Table 2). The mean values of the parameters

were also shown in the table, most of the value exceeded World Health Organization [22] standard for drinking water. The mean values for the anion were 286 mg^l⁻¹ for Cl⁻ against

250 mg l⁻¹ recommended WHO; the presence of high amount of chloride indicates linkage from septic. PO₄²⁻ value was found to be 36.2 mg l⁻¹. Other anions such as NO₃⁻, SO₄²⁻ were below the permissible limit. The major cations; Na⁺, Ca²⁺ and Mg²⁺ were within the required standard. Electrical conductivity (EC) was found to be below (WHO, 2006) standard of 1200 mg l⁻¹. The alkalinity recorded 1.51 mg l⁻¹ against 100 mg l⁻¹. The TDS, DO, BOD, COD, TSS mean values were; 20 mg l⁻¹, 64 mg l⁻¹, 4.26 mg l⁻¹, 25.9 mg l⁻¹ and 20 mg l⁻¹ respectively. Of the heavy metals

assessed, the values were high in some areas while in other areas, the values were low as summarize in (Table 2). Most worrisome is the total coli form count measure in MPN/100M1. The values of all the total coli form count across the wells where above WHO value of value of 0 (Table 3) some of the wells recorded 38, 23,14,13,12 and 11 respectively, this is alarming. From the foregoing, the inhabitants of Onitsha and environs are seriously exposed to health risk. The geochemical result is similar to early researcher in study area [6,11].

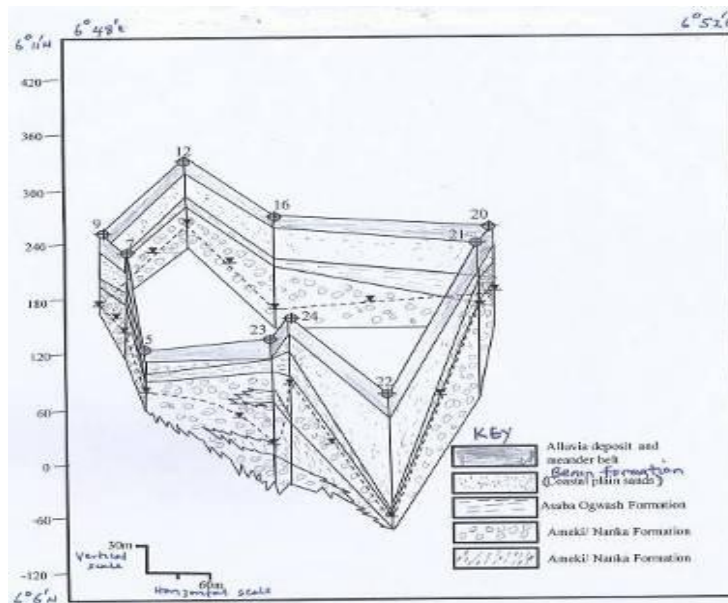


Fig. 3. Geologic Fence diagram for Onitsha and Environs

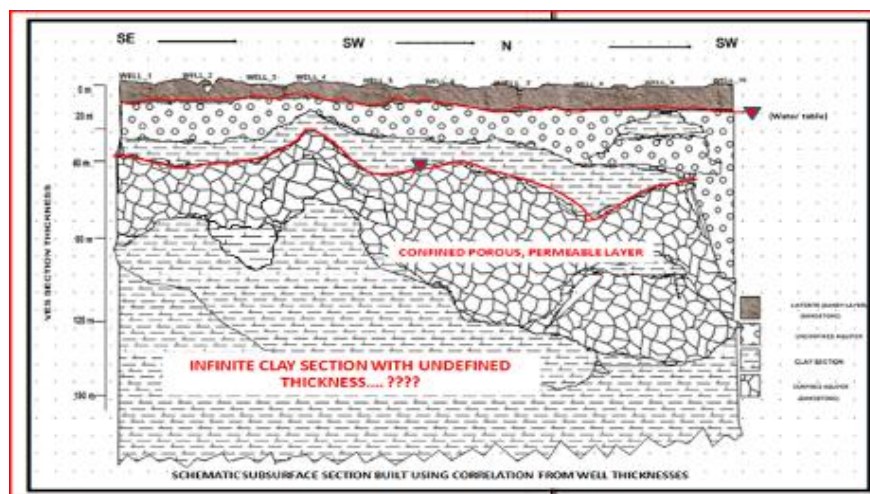


Fig. 4. Sequence stratigraphy of the study area

Table 2. Results of physiochemical parameters for the study area compared with WHO (2006)

Location	PH	EC	ALK.	COLOUR	TURB.	TSS	TDS	DO	BOD	COD	HCO ₃ ⁻ mg/l	Na mg/l	K mg/l	Ca mg/l	Mg mg/l	TEMP	HARD	PO ₄ ³⁻ mg/l	NO ₃ mg/l	SO ₄ ²⁻ mg/l	Cl ⁻ mg/l	Ba mg/l	Cu mg/l	Mn mg/l	Fe mg/l	Zn mg/l
1	7	100	56	2.7	11	0	20	6.1	4.7	24.8	30.05	1.08	0.8	2.25	0.72	27.5	68	53.5	9.6	27	284	0.04	0.01	0.03	0.49	0.15
12	6.5	91	220	1.9	8	1.9	40	7.3	4	18.1	61	1.79	0.15	3.17	2.19	29.1	102	50	14.8	80	343	0.04	0.01	0.05	0.47	0.12
2	6.8	109	160	1.6	8	6.3	30	4.4	4	42.2	12.2	3.2	0.23	8.62	1.1	28.5	70	30.5	20.4	99	450	0.08	0.01	0.22	0.38	0.71
23	7.1	71	151	0.9	9	2.5	10	7.3	4.4	12.4	30.5	0.93	0.61	1.46	0.74	29	106	39.5	7.6	22	225	0.14	0.01	0.48	0.27	0.04
9	7	74	150	0.5	10	32	20	6.2	4	16.2	18.3	0.85	0.32	2.79	1.31	28.3	90	7.5	21.6	89	320	0.02	0.01	0.03	0.30	0.36
7	7	80	130	2.4	7	2.7	10	5.8	4.8	16	48.8	1.26	0.46	3.68	0.9	28.1	86	55.5	6	11	154	0.12	0.03	0.06	0.65	0.04
16	6.7	86	211	1.5	11	2.4	20	6.9	5.2	34.2	42.7	1.23	0.34	4.12	1.03	27.9	120	32.7	14.2	98	296	0.12	0.04	0.46	0.38	0.10
21	7.1	89	90	2.2	9	2.8	20	6.8	2.3	21.6	36.6	0.89	0.79	2.47	0.81	29	64	10.5	13.6	57	260	0.26	0.13	0.13	0.35	0.21
20	6.5	91	140	1.4	10	2.3	20	6.4	4.4	19	61	1.56	0.26	3.62	2.57	29.1	66	21	9.4	30	237	0.12	0.06	0.52	0.57	0.12
22	6.8	99	200	0	7	7.5	10	7.2	4.8	54.2	36.6	3.32	0.61	8.34	1.09	29.2	82	61.5	19.5	68	291	0.04	0.01	0.26	0.27	1.16
TOTAL	68	890	1508	15.1	90	60	200	64	42.6	259	377.8	16.11	4.57	40.5	12.5	286	854	362	137	576	2858	1	0.31	2.24	4.13	2.99
MIN	6.5	71	56	0	7	0	10	4.4	2.3	12.4	12.2	0.85	0.15	1.46	0.72	27.5	64	7.5	6	11	154	0	0.01	0.03	0.27	0.04
MAX	7.1	109	220	2.7	11	32	40	7.3	5.2	54.2	61	3.32	0.8	8.62	2.57	29.2	120	61.5	21.6	99	450	0.3	0.13	0.52	0.65	1.16
MEAN	6.8	89	151	1.51	9	6	20	6.4	4.26	25.9	37.78	1.611	0.457	4.05	1.25	28.6	85	36.2	13.7	58	286	0.1	0.03	0.22	0.41	0.3
S. D	0.2	11.87	51.8	0.85	1.5	9.4	9.428	0.9	0.8	13.5	16.24	0.919	0.234	2.46	0.63	0.6	19	19.1	5.52	33	78.6	0.1	0.04	0.2	0.13	0.36
WHO	6.5-8	1200	100	5	5	N/S	1500	N/S	N/S	500	200	200	0.2	75	50	25	500	10	50	500	250	0.05	0.5	0.1	0.3	0.01

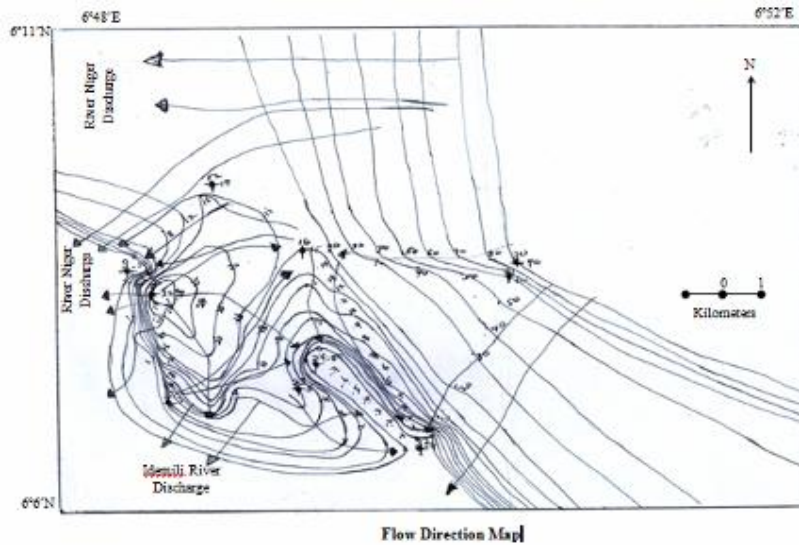


Fig. 5. Groundwater flow direction

Table 3. Coordinate and hydraulic head value calculated for boreholes around the study area

S/N	Latitude	Longitude	Elevation ASL (M)	Depth to SWL (M)	Hydraulic head (M)	Location
5	6°46'38 ¹¹ .3	6°07'07 ¹¹ .5	42.2	39.6	2.6	New Heaven Layout Okpoko
7	6°46'29 ¹¹ .4	6°08'29 ¹¹ .4	39.6	75	32.1	Fegge Obosi Street
9	6°46'12 ¹¹ .4	6°08'47 ¹¹ .4	23.6	72.248	-48.7	Niger Steel Road: Main Market
12	6°47'07 ¹¹	6°09'48 ¹¹ .3	79.6	63	16.6	GRA Phase 1
16	6°48'00 ¹¹	6°09'01 ¹¹	103.1	88.392	14.7	Awka Road Emmanuel Ch Rd. Inland town
20	6°50'00 ¹¹ .6	6°08'148 ¹¹ .9	149.9	64.008	85.9	Nkpor
21	6°49'59 ¹¹ .6	6°08'41 ¹¹ .3	121.5	64.008	57.5	Nkpor
22	6°49'03 ¹¹	6°06'30 ¹¹ .4	107.8	108	-0.2	Near Federal Ministry of Works Obosi
23	6°47'540 ¹¹	6°07'17 ¹¹ .6	111.2	106.5	4.7	Awada Plastic Industry
24	6°47'64 ¹¹ .3	6°07'35 ¹¹ .0	59.6	67.8	-8.2	Mgbemena St. Awada

Table 4. Values of coli form count

S/N	Code	Coli form count
1	BH1	11
2	BH 12	38
3	BH2	23
4	BH23	12
5	BH9	1
6	BH7	12
7	BH16	12
8	BH21	11
9	BH20	13
10	BH22	14
	WHO	0

4. CONCLUSION

The hydrogeology and groundwater quality assessment of the middle aquiferous horizon of Onitsha in Anambra Basin in Eastern Nigeria

have been carefully studied. The aquifer based on 3D geologic fenced diagram belongs to Ameki group in Anambra basin, South Eastern Nigeria. The lithology and piezometric surfaces of the study area are shown in (Fig. 2). The diagram revealed that the study areas are overlain with lateritic overburden with variable thickness (Fig. 4). Below the lateritic overburden is sequence of coarse sandy horizon which is underlain by clay of about six (6) metres at Awada Plastic Industrial area to about twenty three (23) metres at the Nkpor. It also show that the clay is underlain with shale and sandy horizon at about 102 (m) meters below the surface is the top of a medium grained sand zone which is the main aquifer that varies in thickness. The aquifer is prolific and flows in a multidirectional local network occasion by the depression which occurs as a result of massive

extraction of groundwater from the closely sunk boreholes in the middle aquifer couple with the ever increasing population of the inhabitants in the study area [1,2,19].

The results obtained from the groundwater samples shows that coli form counts were very high in the all the well as shown in (Table 4). The cations and anions were slightly higher than normal while others were below limits when compared with [22]. Other physicochemical parameters such as COD, BOD, BO, TSS, TDS, etc were also measure and the results were presented in (Table 2).

The ultimate results shows that the water quality is very poor; this is influenced by infiltration of leachate, linkages from the septic tanks couple with runoff from dumpsite and poor environmental management of the study area occasion by anthropogenic activities [8,23]. In the nearest geological time frame, there may be a natural disaster such as landslide owing to mass movement as a result of soil instability due to extraction of water from closely sunk boreholes and several storey building in the study area of study.

5. RECOMMENDATION

- Drilling of wells into the middle aquiferous horizon should be discontinued in other to minimize the rate of water extraction from the aquifer.
- Drillers and contractors should be encouraged to drill deeper into the deep aquiferous horizon so as to obtain clean and potable water, and as a result decongesting the number of wells being sunk in the middle aquiferous horizon.
- The water from the middle aquiferous horizon should be well treated before consumption by applying Adsorption and Osmosis filter method etc.
- Government should ensure compliance to existing environmental laws and stiff punishment given to defaulters.
- Health survey should be carried out to shows the extent of exposure and health impact on the receiving communities.

COMPETING INTERESTS

Authors have declared that no competing interests exist.

REFERENCES

1. Ezemeodo LC. Urban sprawl identification, analysis and modelling using remote sensing and GIS, a case study of Onitsha metropolis; Unpublished M.Sc Thesis (M018), Department of Surveying and Geoinformatics, Nnamdi Azikiwe University Akwa; 2012.
2. Montgomery CW. Environmental geology, Sixth Edition. McGraw-Hill Higher Education, Internal Edition ISBN 0-07-119941-1. 2003;553.
3. Reyment RA. Aspects of the geology of Nigeria. University of Ibadan Press. 1965;145.
4. Nfor BN. Sedimentary Facies and the Diagnostic Characteristics for the Campanian-Eocene Anambra Basin. Anambra Basin; Unpublished PhD Thesis. Department of Geological Sciences. Nnamdi Azikiwe University, Awka. 2003; 236.
5. Nigerian Population Commission; The Nigerian Population Census Federal Government of Nigeria, Abuja; 1991.
6. Egboka BCE, Okpoko EW. Conjunctive uses of water resources and management in Anambra State Nigeria. Journal of Applied Science and Environment management. 2008;10(3):27-30.
7. Mozie AT, Ayadiuno RU. The role of government in the degradation of landscape in Onitsha and its environs: Present state and future expectations. Nigeria Journal of Geography and the Environment. 2008;1:119-127.
8. Nwajei GE, Iwegbue MAC. Heavy metals in surface soils under waste dumps from Onitsha, Nigeria. Bio. Sci. J. 2007;7(2): 405-408.
9. Nduka JKC, Orisakwe OE, Ezenwankwo LO, Ezenwa TE, Chendo MN, Ezeabasili NG. Acid rain phenomenon in Niger Delta Region of Nigeria. Economic, Biodiversity and Public Health Concern. Sci World J. 2008;811-818.
10. Orisakwe OE, Asomugha R, Obi E, Nduka JC, Dioka CE. Impact of effluents from cable manufacturing plant on food, water and soil qualities in Nnewi. Pakistan, J.B101. Sci. 2004;8:744-747.
11. Das D. GIS application in hydrogeologic studies, GIS Development. Department of Environmental Science, University of Kayyani, W.B. -741235, India; 2001.

12. Handididu JA, Natural growth, water demand and supply strategies in Nigeria in the 1960s. Journal of the Nigeria Association of Hydrogeologist (NAH). 1990;12.
13. Offodile ME. An approach to groundwater study and development in Nigeria Mecon Service Limited, Jos, Nigeria. 1991;245.
14. Nwajide CS. Geology of Nigeria sedimentary basins. CSS Publisher, Lagos Nigeria. 2014;520.
15. Allen SE, Grinshaw HW, Parkinson JA, Quarmby C. Chemical methods of analysing ecological materials. London, UK, Blackwell Scientific Publication. 1974;565.
16. Ademoroti CMA. Standard methods of analysis of water and wastewater. Fodulex Press Limited, Ibadan. First Edition. 1996;171-183.
17. Adelekan BA, Abegunde KD. Heavy metals contamination of soil and groundwater at automobile mechanic villages in Ibadan Nigeria. International Journal of Physical Science. 2011;6(5): 1045-1058.
18. Akpoborie IA. Urbanization and groundwater conditions in the western Niger Delta: Case study of the Warri-Effurun area, Delta State, Nigeria. Urban Water Journal; 2012.
19. Olobaniyi SB, Ogala JE, Nfor NB. Hydrogeochemical and bacteriological investigation of groundwater in Agbor Area, Southern Nigeria. Journal of Mining and Geology. 2007;43(1):79-89.
20. Ajibade OM, Omosanya KO, Odunsi GO. Groudwater potability and flow direction of urban aquifer, Ibadan South West Nigeria. Water Resource Journal of the Nigeria Association of Hydrogeology. 2011;21:38-50.
21. WHO, Guidelines for Drinking Water Quality: Health Criteria and other Support Information Vol. 12nd (Ed). World Health Organization, Geneva; 2006.
22. Imasuen OI, Omorogieva OM. Sources and environmental implication of heavy metal pollution in plants grown around contaminated site in Edo State, Nigeria. Resource Journal in Engineering and Applied Sciences: USA. 2013a;2(5):385-391.
23. Ezeomede I, Igbokwe J. Mapping and analysis of land use and land cover for sustainable development using high resolution satellite images and GIS. TS03B- Remote Sensing for Land Use and Planning, 6421, FIG Working Week, Abuja Nigeria; 2013.

© 2015 Isikhueme and Omorogieva; This is an Open Access article distributed under the terms of the Creative Commons Attribution License (<http://creativecommons.org/licenses/by/4.0>), which permits unrestricted use, distribution, and reproduction in any medium, provided the original work is properly cited.

Peer-review history:

*The peer review history for this paper can be accessed here:
<http://www.sciencedomain.org/review-history.php?iid=1140&id=5&aid=9555>*