



Images in Acute Ischemic Event of Bilateral Total Internal Carotid Artery: A Case Report and Review

Karen Sandoval Flores ^{a*}, Alexis Eliseo Santos Rodríguez ^a
and Joaquín Núñez Gómez ^a

^a *Radiology Department, Hospital "Dr. Miguel Silva," Morelia, Michoacán, Mexico.*

Authors' contributions

This work was carried out in collaboration among all authors. All authors read and approved the final manuscript.

Article Information

Open Peer Review History:

This journal follows the Advanced Open Peer Review policy. Identity of the Reviewers, Editor(s) and additional Reviewers, peer review comments, different versions of the manuscript, comments of the editors, etc are available here: <https://www.sdiarticle5.com/review-history/118961>

Case Report

Received: 18/04/2024

Accepted: 19/06/2024

Published: 24/06/2024

ABSTRACT

Cerebrovascular disease represents one of the leading causes of morbidity worldwide and is the main cause of acquired disabilities. The degree of neurological damage varies according to the extent of the infarction and hemispheric dominance. The middle cerebral artery is the most commonly affected vessel in cerebrovascular pathology. Although rare, obstruction of both internal carotid arteries can occur and is rarely described. This article aims to guide the clinician in an organized manner to detect the severity of the disease and thereby guide the treatment. Without a doubt, it is important that medical centers, at least in regional centers, have both technological equipment and trained personnel to care for patients with these characteristics and thus achieve a favorable result.

Below is a case report of this phenomenon and the images obtained during your care at our hospital.

⁺⁺ Resident;

[#] Attending Physician;

^{*}Corresponding author: E-mail: karensan08@outlook.es;

Cite as: Flores, Karen Sandoval, Alexis Eliseo Santos Rodríguez, and Joaquin Nunez Gomez. 2024. "Images in Acute Ischemic Event of Bilateral Total Internal Carotid Artery: A Case Report and Review". *Asian Journal of Case Reports in Medicine and Health* 7 (1):87-92. <https://journalajcrmh.com/index.php/AJCRMH/article/view/192>.

Keywords: Acute ischemic stroke; CT signs; MRI signs; bilateral stroke; thrombectomy.

ABBREVIATIONS

| | |
|---------|--|
| CVD | : Cerebrovascular Disease |
| NIHSS | : The National Institutes of Health Stroke Scale |
| CT | : Computed Tomography |
| ACR | : American College of Radiology |
| TIA | : Transient Ischemic Attack |
| MRI | : Magnetic Resonance Imaging |
| ASPECTS | : Alberta Stroke Program Early CT Score |
| WI | : Diffusion-Weighted Imaging |
| ADC | : Apparent Coefficient Diffusion |
| LAIR | : FLuid Attenuated Inversion Recovery |

1. INTRODUCTION

Cerebrovascular disease (CVD) is historically characterized as the neurological dysfunction caused by acute damage in a specific region of the central nervous system, originating from vascular factors such as ischemia or hemorrhage. It is a significant cause of disability and mortality worldwide [1]. The main risk factors that increase the likelihood of developing it are advanced age, female gender, smoking, dyslipidemia, systemic arterial hypertension, and diabetes mellitus. Symptoms manifest according to the affected vascular region and may improve or worsen gradually depending on the penumbra area.

There is a scale used to determine the severity of CVD, The National Institutes of Health Stroke Scale (NIHSS); its importance lies in its utility for identifying patients with proximal thrombosis and, consequently, the probability of treatment by mechanical thrombectomy [2].

The etiology can be of five types according to the TOAST classification [3] (1. large artery atherothromboembolic, 2. cardioembolism, 3. small vessel disease, 4. infarction of determined etiology, 5. infarction of undetermined etiology). The treatment of CVD will be directed depending on its etiological origin, with thrombosis being the main cause [3-6].

Thanks to technological advances, through the use of non-invasive sectional imaging studies, such as computed tomography (CT) or magnetic resonance imaging (MRI), it is possible to precisely determine whether a patient is experiencing an ischemic event or a condition that simulates its symptoms. According to the

American College of Radiology (ACR) appropriateness criteria, these are the initial images to be performed in clinical scenarios related to CVD [7].

2. CASE PRESENTATION

A 69-year-old female patient with grade 1 obesity, a history of systemic arterial hypertension, and type 2 diabetes mellitus under adequate control, presented to the emergency department. The reason for consultation was a sudden neurological deficit in the morning, with an approximate lapse of 80 minutes between its onset and hospital evaluation. During the evaluation, the patient scored 30 on the NIHSS scale, suggesting a cerebrovascular event. Neuroimaging studies were decided, starting with a simple cranial computed tomography with multiplanar reconstruction (Fig. 1). Due to the patient's clinical condition and the absence of imaging correlation with the cranial CT, a brain MRI was requested by the emergency department (Fig. 2) with a STROKE protocol which includes images in Diffusion-Weighted Imaging (DWI), Apparent Coefficient Diffusion (ADC), Gradient Echo and T2 Fluid Attenuated Inversion Recovery (FLAIR), highlighting bilateral restriction to diffusion in the ternal carotid artery territory in DWI confirmed on the ADC map, as well as hyperintensity in the FLAIR sequence (Fig. 3). Since the institution does not have a hemodynamics room, a transfer to a qualified care center was requested; however, the patient expired during the transfer.

3. DISCUSSION

To determine the origin of cerebrovascular disease, it is essential to evaluate various clinical aspects of the patient. This involves examining personal and family medical history, any previous episodes of stroke or transient ischemic attack (TIA), as well as the activity the patient was engaged in at the onset of the cerebrovascular event and how the neurological signs and symptoms have progressed.

It is crucial to know the patient's medical history, especially systemic diseases, as these may provide important clues about the underlying mechanism of the disease. For example, high blood pressure, heart murmurs, or other cardiac pathologies can significantly influence the identification of the mechanism of stroke [1].

There are case reports associated with hypercoagulability, Antiphospholipid Antibody Syndrome, one associated with Behçet's disease, and another with giant cell arteritis.

Cases have even been reported in correlation with marijuana use, as it conditions atherogenesis and multifocal intracranial stenosis [8,9].

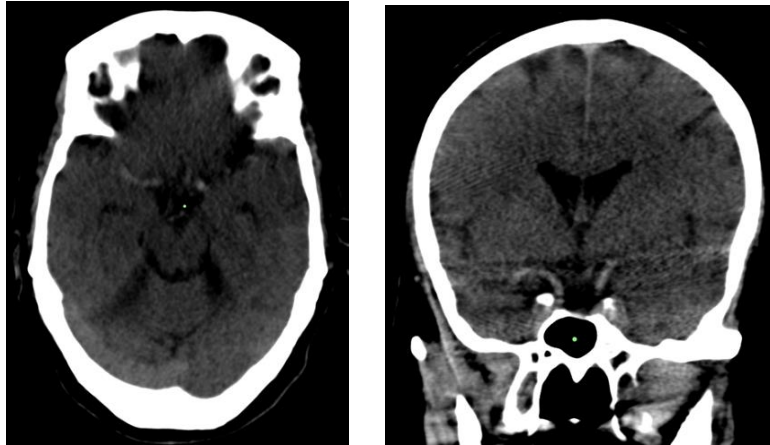


Fig. 1. Simple skull tomography: Axial (A) and coronal (B) section; in both, the sign of bilateral hyperdense MCA is observed

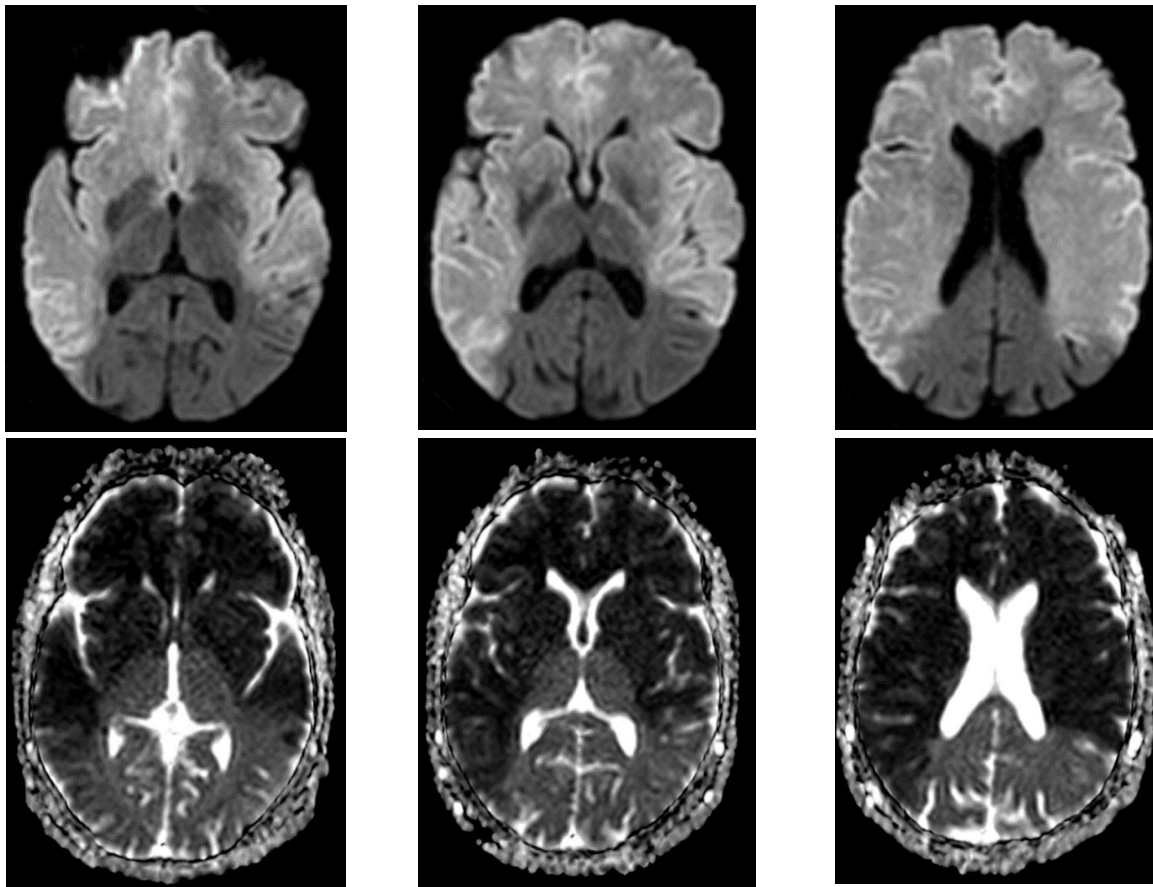


Fig. 2. Brain MRI in axial sections: top row shows DWI sequence and bottom row shows ADC map; true diffusion restriction in the territory of the internal carotid artery is demonstrated bilaterally

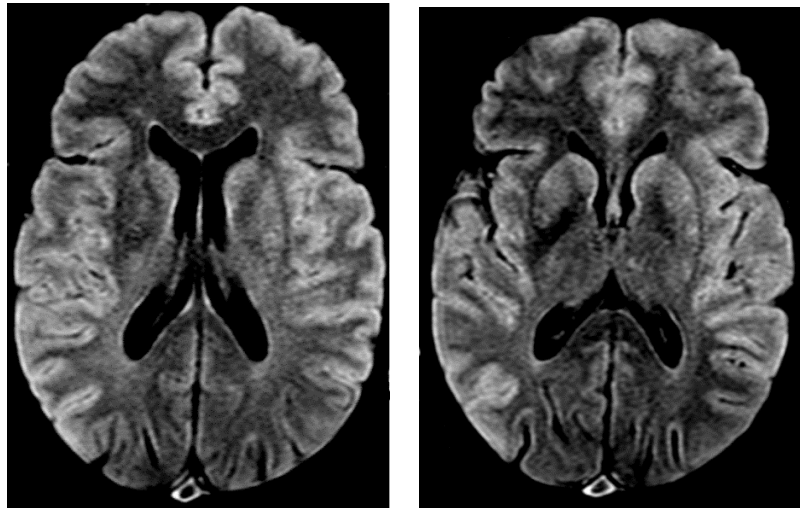


Fig. 3. Brain magnetic resonance imaging in FLAIR axial sequence, with generalized and bilateral hyperintensity in the vascular territory of the internal carotid artery

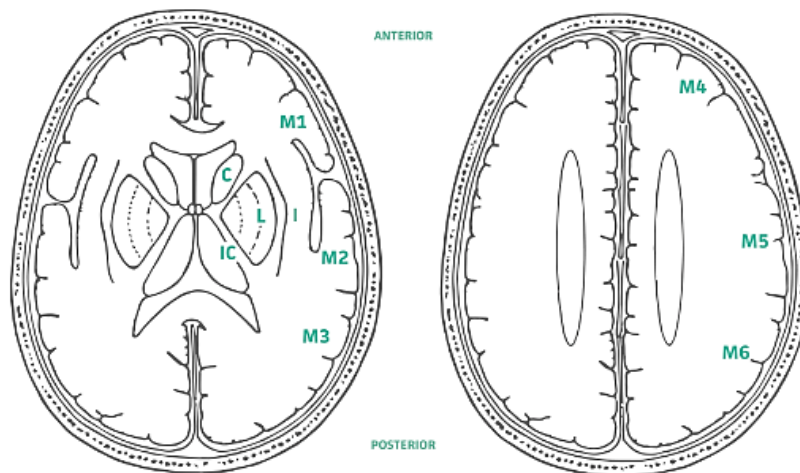


Fig. 4. Content contributors: Daniel Runde, MD.

Non-contrast CT is the primary imaging modality to guide the management of patients with stroke. Initially, it is performed to rule out intracranial hemorrhage or identify early signs of ischemia (which are not always evident). However, for an accurate and rapid diagnosis of vascular occlusion, CT angiography is necessary. This method can identify anatomical variants, dissections, aneurysms, stenoses, or other vascular anomalies that may explain the patient's clinical status. Therefore, it is essential for radiologists, neurologists, as well as emergency personnel to be familiar with the typical and early findings identified by CT, and based on this, have the necessary tools to make precise and timely decisions for proper management, whether it is the intravenous administration of fibrinolytics in

primary care centers or transfer of patients with large vessel occlusion to a specialized center for endovascular management through mechanical thrombectomy [10].

The early signs of stroke on non-contrast CT have a sensitivity and specificity of 66% and 87%, respectively. The most frequent ones are: decreased differentiation between gray and white matter in the affected area, hyperattenuation of the middle cerebral artery, hypoattenuation of the lentiform arteries, effacement of cerebral sulci, hypoattenuation of the basal ganglia [10,11].

Angiography is used to diagnose proximal occlusion of large vessels in patients with MCA or ACA syndrome. In addition, MRI with DWI and

ADC mapping remains the standard for assessing the location and extent of infarction. It is important to remember the relevance of the DWI sequence since it will show an increase in signal in the ischemic tissue minutes after arterial occlusion as a consequence of cytotoxic edema and accompanied with the ADC map the diffusion impedance of water will be evaluated. Although non-contrast CT has lower sensitivity than diffusion to detect cytotoxic edema associated with early ischemia, its wide availability and speed make it the initial study in most medical centers [11].

A quantitative score for early CT was developed to evaluate ischemic changes in less than 3 hours after the onset of stroke symptoms, the Alberta Stroke Program Early CT Score (ASPECTS) divides the MCA territory into 10 regions of interest and is recognized by the American Heart Association (AHA) as a recommendation criterion for endovascular treatment in those with a score ≤ 6 at the start of the study. There are currently variations of the scoring system applied in the posterior circulation called pc-ASPECTS [12] (Fig. 4).

Large vessel occlusions represent approximately one out of every two to four admissions for acute ischemic stroke, with 10% to 15% occurring in more than one territory, as additional clots may exist both within and outside the occluded territory. Identifying and correctly diagnosing multivessel occlusion is crucial for determining appropriate treatment [13].

Acute bilateral occlusion of a large intracranial artery is a rare phenomenon that can lead to bihemispheric ischemia, with an unfavorable prognosis, leading to conditions such as coma, decerebration, or death. Although some cases with recanalization after endovascular therapy have been reported, optimal revascularization strategies and prognosis are still unclear [14,15].

Some of the most relevant clinical trials, such as DAWN, report that collateral circulation capacity is more relevant than the absolute time from onset of the event and demonstrate that thrombectomy combined with standard care, as opposed to standard care alone, results in significant functional improvements even when performed between 6 and 24 hours after acute ischemic stroke, especially in patients with a discrepancy between clinical deficit and cerebral infarct area [16,17].

4. CONCLUSION

Simultaneous occlusion of cerebral arteries, and even more so, common carotid arteries, although occurring infrequently, presents an unfavorable prognosis for the patient due to delayed diagnosis and treatment. Early determination of time of onset and disease severity is crucial, emphasizing the capability of personnel and access to appropriate diagnostic technology.

Although DWI is the standard for assessing the extent of ischemia, CT is more accessible, and the literature highlights the importance of vascular collateralization and combined medical care with thrombectomy to improve recanalization time and prognosis.

Limited literature reports good outcomes after mechanical thrombectomy, and it has been demonstrated that endovascular therapy is effective even when applied between 6 and 24 hours after disease onset, establishing itself as the standard treatment for intracranial large vessel occlusion.

DISCLAIMER (ARTIFICIAL INTELLIGENCE)

AI was used to correct grammatical errors.

ChatGPT, based on OpenAI's GPT-4 architecture.

CONSENT

According to international standards or university standards, the authors have collected and retained written consent from the patient.

ETHICAL APPROVAL

It is not applicable.

COMPETING INTERESTS

Authors have declared that no competing interests exist.

REFERENCES

1. Sacco RL, Kasner SE, Broderick JP, Caplan LR, Connors JJB, Culebras A, et al. An updated definition of stroke for the 21st century: a statement for healthcare professionals from the American Heart

- Association/American Stroke Association. Stroke. 2013 May 7;44(7):2064–89.
2. Lyden P. Using the National Institutes of Health Stroke Scale. Stroke. 2017 Feb; 48(2):513–9.
 3. Rathburn CM, Mun KT, Sharma LK, Saver JL. TOAST stroke subtype classification in clinical practice: implications for the Get with The Guidelines-Stroke nationwide registry. Frontiers in neurology. 2024 Mar 22 [cited 2024 Apr 24];15.
 4. Sharma D, Dahal U, Yu E. Complete Occlusion of Bilateral Internal Carotid Artery in a Marijuana Smoker: A Case Report. Journal of Clinical Medicine Research. 2019;11(4):305–8.
 5. AbuRahma AF, Copeland SE. Bilateral internal carotid artery occlusion: natural history and surgical alternatives. Cardiovascular surgery. 1998 Dec 1;6(6): 579-83
 6. Beutler BD, Rangaswamy R, Bruno AJ, Tabaac BJ. Acute bilateral internal carotid artery occlusion: a novel approach to management of a catastrophic clinical entity. Clinical Imaging. 2021 Aug 1;76: 166-74.
 7. T. Masaryk, Drayer BP, Anderson RE, B. Braffman, Davis PC, Deck MD, et al. Cerebrovascular disease. American College of Radiology. ACR Appropriateness Criteria. PubMed. 2000 Jun 1;215 Suppl:415–35.
 8. Öge DD, Gültekin Zaim ÖB, Arsava EM, Topçuoğlu MA. Simultaneous bilateral internal carotid artery occlusion: a case report and review of literature. Turkish Journal of Cerebrovascular Diseases 2021;27(1):50-55. DOI: 10.5505/tbdhd.2020.47704.
 9. Sharma D, Dahal U, Yu E. Complete Occlusion of Bilateral Internal Carotid Artery in a Marijuana Smoker: A Case Report. Journal of Clinical Medicine Research. 2019;11(4):305–8.
 10. Potter CA, Vagal AS, Goyal M, Nunez DB, Leslie-Mazwi TM, Lev MH. CT for Treatment Selection in Acute Ischemic Stroke: A Code Stroke Primer. Radio Graphics. 2019 Oct;39(6):1717–38.
 11. Wardlaw JM, Mielke O. Early Signs of Brain Infarction at CT: Observer Reliability and Outcome after Thrombolytic Treatment—Systematic Review. Radiology. 2005 May;235(2):444–53.
 12. Pop N, Tit D, Diaconu C, Munteanu M, Babes E, Stoicescu M, et al. The Alberta Stroke Program Early CT score (ASPECTS): A predictor of mortality in acute ischemic stroke. Experimental and Therapeutic Medicine. 2021 Sep 27;22(6).
 13. Johannes Kaesmacher, Pascal John Mosimann, Giarrusso M, Marwan El-Koussy, Zibold F, Eike Immo Piechowiak, et al. Multivessel Occlusion in Patients Subjected to Thrombectomy. Stroke. 2018 Jun 1;49(6):1355–62.
 14. Pop R, Manisor M, Wolff V, Habashy M, Rouyer O, Kehrlı P, et al. Endovascular Treatment in Two Cases of Bilateral Ischemic Stroke. CardioVascular and Interventional Radiology. 2013 Oct 4;37(3): 829–34.
 15. Dietrich U, Graf T, Schäbitz WR. Sudden Coma from Acute Bilateral M1 Occlusion: Successful Treatment with Mechanical Thrombectomy. Case Reports in Neurology. 2014 May 9;6(2):144–8.
 16. Miran Jeromel, Zoran Milošević, Janja Pretnar Oblak. Mechanical recanalization for acute bilateral cerebral artery occlusion – literature overview with a case. Radiology and Oncology. 2020 Mar 26; 54(2):144–8.
 17. Nogueira RG, Jadhav AP, Haussen DC, Bonafe A, Budzik RF, Bhuva P, et al. Thrombectomy 6 to 24 Hours after Stroke with a Mismatch between Deficit and Infarct. New England Journal of Medicine. 2018 Jan 4;378(1):11–21.

© Copyright (2024): Author(s). The licensee is the journal publisher. This is an Open Access article distributed under the terms of the Creative Commons Attribution License (<http://creativecommons.org/licenses/by/4.0>), which permits unrestricted use, distribution, and reproduction in any medium, provided the original work is properly cited.

Peer-review history:

The peer review history for this paper can be accessed here:

<https://www.sdiarticle5.com/review-history/118961>