



Profiling Rhizosphere Microbes on the Root of Maize (*Zea mays*) Planted in an Alfisol for Selection as Plant Growth Promoting Rhizobacteria (PGPR)

L. B. Taiwo^{1*}, B. V. Ailenokhuoria² and A. O. Oyedele¹

¹Soil Microbiology Unit, Institute of Agricultural Research and Training, Obafemi Awolowo University, Moor Plantation, Apata, P.M.B. 5029, Ibadan, Nigeria.

²Biotechnology Unit, Institute of Agricultural Research and Training, Obafemi Awolowo University, Moor Plantation, Apata, P.M.B. 5029, Ibadan, Nigeria.

Authors' contributions

This work was carried out in collaboration between all authors. Author LBT designed and supervised the study, wrote the protocol, and wrote the first draft of the manuscript. Authors BVA and AOO managed the laboratory analyses of the study, the literature searches and the drafts of the manuscript. All authors read and approved the final manuscript.

Article Information

DOI: 10.9734/MRJI/2017/36404

Editor(s):

(1) David Nadeba Bukbuk, University of Maiduguri, Nigeria.

Reviewers:

(1) Dusit Athinuwat, Thammasat University, Thailand.

(2) V. Vasanthabharathi, Annamalai University, India.

(3) Mehmet Rüştü Karaman, Afyon Kocatepe University, Turkey.

Complete Peer review History: <http://www.sciencedomain.org/review-history/21319>

Original Research Article

Received 27th August 2017

Accepted 25th September 2017

Published 10th October 2017

ABSTRACT

Maize (*Zea mays* L. Merrill) root rhizosphere, being a metabolite-enriched niche was profiled with the objective of isolating Plant Growth Promoting Rhizobacteria (PGPR) for bio-fertilizer production. Isolation was carried out from the root surface and rhizosphere soil samples of the plant using standard procedures. Cultural, physiological and biochemical procedures were used to identify the isolates. Eighty (80) isolates obtained were screened for growth promoting attributes and sixteen (16) representative isolates selected, and further identified using molecular methods by sequencing of their 16S rDNA gene. Sixty three percent of the characterized organisms exhibited sequence homology level equal or greater than 90% with those of the gene bank. Microorganisms with pathogenic characteristics were eliminated. As a result of this, *Bacillus thuringiensis*, *Pseudomonas*

*Corresponding author: E-mail: lbtaiwo@yahoo.com;
Email: adeedii@yahoo.com;

putida and *Klebsiella varriicola* selected, were further screened *in vitro* for Indole acetic acid (IAA), Gibberellic acid (GA) and Cytokinin production using standard assay methods. *Klebsiella varriicola* produced 19.697 mg/L of GA, 0.348 mg/L of IAA and 1.804 mg/L of Cytokinin. *Pseudomonas putida* had 2.693 mg/L of GA, 0.152 mg/L and of IAA and 5.066 mg/L of Cytokinin in solution while *Bacillus thuringiensis* excreted 15.091 mg/L, 0.132 mg/L and 2.410 mg/L of GA, IAA and Cytokinin respectively. The 3 PGPR are considered suitable for biofertilization programme.

Keywords: Plant Growth Promoting Rhizobacteria (PGPR); rhizosphere microbes; maize; alfisol.

1. INTRODUCTION

Plant growth promoting rhizobacteria (PGPR) are a group of microorganisms that enhance growth parameters of host plants and can be used as bio-fertilizers. The rhizosphere is a rich niche of microbes and should be explored for obtaining potential plant growth promoting rhizobacteria (PGPR) [1]. These set of soil microbes play critical roles in Plant-Microbe relationships. The microbes enhance plant growth, development and nutrient uptake and yield [2,3]. The means by which PGPR enhance soil nutrient status were categorized into 5 [4]: i) biological nitrogen fixation, ii) increasing the availability of nutrients in the rhizosphere, iii) inducing increases in the root surface area, iv) enhancing other beneficial symbiosis of the host and v) a combination of the previously mentioned modes of action.

Common PGPR include the strains in the genera *Acinetobacter*, *Alcaligenes*, *Arthrobacter*, *Azospirillum*, *Azotobacter*, *Bacillus*, *Beijerinckia*, *Burkholderia*, *Enterobacter*, *Erwinia*, *Flavobacterium*, *Rhizobium* and *Serratia* [5]. Plant growth promoting rhizobacteria (PGPR), due to their potentials have shown importance and have gained acceptance for agricultural benefits worldwide. These microorganisms are the potential tools for sustainable agriculture and the trend for the future. The mode of action of many PGPR is by increasing the availability of nutrients for the plants in the rhizosphere [6,7]. Several scientific researches which involve multidisciplinary approaches are being conducted to understand the application of PGPR to the rhizosphere, their mechanisms of root colonization, effects on plant physiology and growth, bio-fertilization, induced systemic resistance, bio-control of plant pathogens and production of determinants [8]. Several studies have shown the effectiveness of PGPR in improving the growth and yield of several fruit crops such as strawberry [9], vegetables such as cabbage [10], cereals such as wheat and

barley [11], oil palm [12], root and tuber crops [13] and various legumes [14,15].

Phytohormone production by microbes can modulate the endogenous plant hormone levels and consequently have an enormous influence on plant growth and development [16,17]. Non-conjugated indole-3-acetic acid (IAA) is the most abundant member of the auxin family. It has been estimated that up to 80% of the rhizosphere bacteria can synthesize IAA [18,19]. Bacteria which produce IAA can add to, or influence the levels of endogenous plant auxin [18]. It is assumed that plant growth promotion by exogenously added auxin acts by increasing root growth, length and surface area, thereby allowing the plant to access more nutrients and water from the soil [4].

Plant growth regulators such as gibberellins and cytokinins are important biotechnological and economical products. Gibberellins (GAs) are a large group of important diterpenoid acids among commercial phytohormones [20]. They are endogenous hormones functioning as plant growth regulators and influencing a range of developmental processes in higher plants including stem elongation, germination, dormancy, sex expression and fruit senescence [21]. The objective of the study was to isolate and characterize some PGPR from the rhizosphere and rhizoplane soil of maize plant root and screen them for phytohormone production.

2. MATERIALS AND METHODS

2.1 Collection of Root and Soil Samples

For the purpose of isolation, PGPR were isolated from the rhizoplane and rhizosphere soil of maize (*Zea mays*) plant earlier screened by plant breeders to be tolerant to low nitrogen in soil. Rhizosphere soil and root samples of the healthy maize (*Zea mays*) plants were aseptically

collected from established maize fields at the Institute of Agricultural Research and Training, Moor plantation, Ibadan, Oyo State, South West, Nigeria (7° 23' N; 3° 51'E and 160 m above mean sea level).

2.2 Isolation of Rhizospheric Bacteria

Serial dilution agar plate method was used for further processing of the prepared samples' suspension and suitable dilutions (10^{-3} , 10^{-5} and 10^{-8}) were plated on Tryptic Soy Agar (TSA: Tryptic soy broth plus 5% agar), king's B medium (KBM: 20.0 g/L proteose peptone, 1.50 g/L magnesium sulphate, 1.50 g/L dipotassium hydrogen phosphate, 15.0 g/L agar agar, 10.0 ml/L glycerol, pH 7.2±0.2) and Jensen medium (JM: 20.0 g/L sucrose, 0.5 g/L Sodium chloride, 1.0 g/L Dipotassium hydrogen phosphate, 0.5 g/L magnesium sulphate, 0.1 g/L Ferrous Sulphate, 0.005 g/L sodium molybdate, 2.0 g/L calcium carbonate, 15.0 g/L Agar). Incubation of the media plates was carried out at 35°C ± 2°C for 24 hours after which growth was observed on the respective media plates and individual colonies were picked and streaked on respective fresh media plates for further purification. Pure colonies were observed and kept for identification and further screening.

2.3 Characterization of Bacteria Isolates

Preliminary identification of the bacteria isolates was done using morphological, biochemical and cultural characteristics [22]. Cultural characteristics such as elevation, colour and shape were studied on agar plates. The cells were Gram stained, tested for motility, sugar fermentation and other biochemical analysis including starch hydrolysis, indole, methy red, Voges- Proskauer, citrate, catalase, oxidase, Spore staining, glucose hydrolysis, H₂S production and nitrogenase tests. The isolates were identified based on the results of the tests using Bergey's manual of Determinative Bacteriology.

2.4 Detection of Nitrogen Fixing Activity

The detection of Nitrogen fixing activity was observed using Glucose-Nitrogen free mineral medium (GNFMM: 20g/L Glucose, 1g/L K₂HPO₄, 0.1 g/L CaCl₂, 0.5 g/L NaCl, 0.25 g/L MgSO₄.7H₂O, 0.01 g/L FeSO₄.7H₂O, 0.01 g/L Na₂MoO₄.2H₂O, 0.01g/L MnSO₄.5H₂O, 20 g/L Agar) and BTB as color indicator. The

bacterial isolates were inoculated in test tubes containing 10mls of the medium and these were incubated for a period of 7 days. After the incubation period, a colour change from green to blue indicated nitrogen fixing activity.

2.5 Molecular Identification

Bacteria strains were identified via extraction of genomic DNA using (ZymoBacterial Genomic DNA extraction kit) from 24hrs bacteria culture incubated at 37°C in nutrient broth. The pure DNA was electrophoresed on 1% agarose gel containing 0.5µg/ml ethidium bromide. The DNA was visualized by UV trans-illuminator and photographed. 1500 bp16S rDNA fragment was amplified as described [23]. Forward primer 16SF (5'-GTGCCAGCAGCCGCGCTAA-3') and Reverse primer 16SR (5'-AGACCCGGGAACGTATTCAC - 3') were used. Amplified fragment was extracted from 1.5% agarose gel and this was sequenced using Big Dye Terminator 3.1 sequenced kit. Sequences of partial 16S rDNA genes were determined in both the forward and reverse directions with the primers using the automatic sequencer ABI-PRISM 3100 Genetic Analyzer (Applied Biosystems). The reverse sequence obtained was converted to reverse complementary sequence using Bioedit software and aligned with sequence obtained with forward primers using Basic Local alignment search tool (BLAST) (<http://blast.ncbi.nlm.nih.gov/Blast.cgi>). The aligned sequence were then submitted as a query to BLAST for comparison with the collection of 16S rDNA gene sequences present in the Gen Bank database.

2.6 Extraction and Purification of Indole Acetic Acid (IAA)

The bacterial isolates were inoculated into 20 mL of nutrient broth supplemented with 0.2 % (v/v) of L-tryptophan and incubated at 30 °C. After incubation, the culture was centrifuged at 3,000 rpm for 20 min and the supernatant was used for analyzing indole 3 acetic acid production. 2 ml of the supernatant was mixed with 2 drops of orthophosphoric acid and 2 ml of Salkowski reagent (50 ml, 35% perchloric acid and 1 ml of 0.5 M FeCl₃). The development of the pink color was observed as the indication for positive result while uninoculated growth medium was used as negative control [24].

2.7 Quantification of IAA by HPLC

HPLC chromatograms were produced by injecting 10 µl of the filter extracts onto a (C₁₈, 5 µm 25 x 0.46 cm) in a chromatograph equipped with a differential ultraviolet detector absorbing at 280 nm. Mobile phase was methanol and water (80:20 vol/vol) flow rate was 1.5 ml / min.

Retention time for peaks was compared to those of authentic standards added to the medium extracted by the same procedures used with bacterial cultures. Quantification was done by comparison of peak height.

2.8 Extraction and Purification of Cytokinin

The bacteria isolates were inoculated in Nutrient Broth media and placed on a rotary shaker at 150 rpm for 72 h. The culture media was centrifuged at 16000 rpm for 10 min at 4°C and the supernatant obtained was neutralized with 7N NaOH (pH 7.0) and extraction was done with equal volume of ethyl acetate [25]. Extraction was repeated three times, the filtrate was evaporated to dryness and reconstituted in HPLC grade methanol and subsequently fractionated by reverse phase high performance liquid using cytokinin as standards. Quantification was done by comparing peak area of the tested compound to the standard cytokinin and the wavelength used for detection of cytokinin was 280 nm.

2.9 Extraction and Purification of Gibberellic Acid

Nutrient broth (50 ml) was inoculated with 24 hrs old bacterial culture and placed on a rotary shaker at 100 rpm for 5 days after which the culture broth was centrifuged at 6000 rpm for 15 min, the pellet was discarded and the pH of the supernatant was adjusted to 2.8 with 1 N HCl. Gibberellic acid (GA) was extracted using liquid-liquid (ethyl acetate/ NaHCO₃) extraction method [26]. GA was extracted two times from the supernatant with ethyl acetate (Volume 1:10) and the upper ethyl acetate fraction that contains the free GA was collected. To remove impurities, the ethyl acetate fraction was partitioned two times with 1 M NaHCO₃ (Volume 1:1) and the upper fractions were collected. The pH of the NaHCO₃ fraction was adjusted to 2.0 and the NaHCO₃ solution with the free GA was partitioned two times using ethyl acetate (Volume 1:10) and the upper fraction was collected. All the ethyl acetate fractions were composited together and

evaporated to dryness at 35°C and the residue dissolved in 1500 µl of pure methanol. The sample was analyzed on HPLC using UV detector and C₁₈ Column (39x300 mm). For identification of hormones, a 100 µl sample was filtered through 0.45 millipore filter and 20 µl of the filtered extract injected into a 5 µm reverse phase column. Pure Gibberellic acid dissolved in HPLC grade methanol was used as a standard for identification and quantification of bacterial hormone. Growth hormone was identified on the basis of retention time and peak area of the standard. The wavelength used for the detection of Gibberellic acid was at 280 nm.

3. RESULTS AND DISCUSSION

3.1 Isolation and Characterization of Plant Growth Promoting Bacteria

Plant rhizosphere is a rich environment that hosts a wide array of bacteria including PGPR [25], and in the present study, eighty (80) bacteria were isolated from the root rhizoplane and rhizosphere soil of maize plants tolerant to low nitrogen. Various studies have also reported the isolation of PGPR from the rhizosphere of different plants [27,28,29,30] including *Zea mays* [31,32,33,34]. Probable identity of the bacteria was carried out by means of cultural techniques using morphological and biochemical characteristics. Sixteen representative bacterial isolates showing prolific growth, having different morphological appearance on agar medium as well as exhibiting different biochemical test results were selected. The isolates were stored and used for further studies on plant growth promoting abilities in vitro. The biochemical properties of the bacterial isolates based on the results are shown in Table 1. Sixty percent of the PGPR were isolated from the rhizoplane while 40% were obtained from the rhizosphere soils of maize (*Zea mays*). Dilution factors of 10⁻³, 10⁻⁵ and 10⁻⁸ were used during the bacterial isolation process and out of the representative bacteria selected, 46.7%, 40.0% and 13.3 % were obtained from the 10⁻³, 10⁻⁵ and 10⁻⁸ dilutions respectively indicating that the lowest dilution gave the highest diversity of bacterial isolates (Table 2). The sixteen isolated bacteria were positive for nitrogenase activity, this was indicated by a rapid and intense blue color change observed in the GNFM-medium from the second day of inoculation, suggesting the excretion of ammonia into the medium by the isolates.

Table 1. Some Biochemical characteristics of representative bacteria isolates obtained from the rhizoplane and rhizosphere soils of maize

Sample Identity	Gram Reaction	MR	VP	Oxidase	Catalase	SH	Lac	Glu	Man	Ara	SS	CU	GH	Mot	H ₂ S	Nit Act
RHZA	+	-	+	+	+	+	-	A+G+	-	-	+	-	+	-	-	+++
RHZa	-	-	+	-	+	+	A+G+	A+G+	A+G+	A+G+	-	+	-	-	-	+++
RHZb	-	-	+	+	+	+	-	A+G+	A+G+	-	-	-	+	-	-	+++
RHSc	-	+	-	-	-	+	-	A+G+	A+G+	-	-	+	-	+	+	+++
RHZD	+	-	+	-	+	-	-	A+G+	-	-	+	-	+	+	-	++++
RHZE	-	+	-	-	-	+	-	A+G+	A+G+	-	-	+	-	+	+	++++
RHSe	-	+	-	-	-	+	-	A+G+	A+G+	-	-	+	-	+	+	+++
RHSJ	-	-	+	-	+	+	A+G+	A+G+	A+G+	A+G+	-	+	-	-	-	++++
RHSK	-	-	+	+	-	+	A+G+	A+G+	A+G+	A+G+	-	+	+	+	+	+++
RHZO	-	-	+	-	+	+	A+G+	A+G+	A+G+	A+G+	-	+	-	-	-	+++
RHZR	-	-	-	+	+	+	-	A+G-	A+G-	A+G-	-	+	+	+	+	+++
RHZV	-	-	+	-	+	+	A+G+	A+G+	A+G+	A+G+	-	+	-	-	-	+++
RHZW	+	-	+	-	+	-	-	A+G+	-	-	+	-	+	+	-	++++
RHSX	-	-	+	+	-	+	A+G+	ND	ND	-	NA	-	+	-	-	+++
RHSZ	-	NA	NA	+	+	-	NA	NA	NA	NA	NA	+	+	-	NA	+++
RHZA1	+	-	+	-	+	+	A+G+	A+G+	A+G+	A+G+	+	+	+	+	-	++++

ND: Not done, NA; Not applicable, +:present, -:absent, A+G+=Acid and gas production, A+G-=Acid but no gas production, ++++=Strongly positive, +++=Positive
 MR; methyl red test, VP; Voges proskauer test, SH; Starch Hydrolysis, Lac; Lactose test, Glu ;Glucose test, Man; Mannose test, SS: Spore staining , CU ;Citrate Utilization,
 GH; Glucose Hydrolysis, Mot; Motility test, H₂S; Hydrogen sulphide production, Nitro Act; Nitrogenase Activity

Table 2. Molecular identification of 16S rDNA gene, accession numbers and the origin of representative plant growth promoting rhizobacterial strains

SN	Code	Identified microorganisms	Location in root zone	Dilution	Identity (%)	Genbank accession no
1	RHZA	<i>Bacillus thuringiensis</i>	rhizoplane	10 ⁻⁵	98%	CP009651-1
2	RHZa	<i>Chryseobacterium spp</i>	rhizoplane	10 ⁻⁸	95%	CP007626-1
3	RHZb	<i>Klebsiella pneumonia</i>	rhizoplane	10 ⁻³	98%	AP014624-1
4	RHSc	<i>Proteus vulgaris</i>	rhizosphere	10 ⁻³	98%	CPO1267J-1
5	RHZD	<i>Bacillus cereus</i>	rhizoplane	10 ⁻³	86%	CPO09605-1
6	RHZE	<i>Proteus vulgaris</i>	rhizoplane	10 ⁻⁸	85%	LN558631-1
7	RHZc	<i>Enterobacter sp.</i>	rhizosphere	10 ⁻⁵	97%	CP005991.1
8	RHSe	<i>Klebsiella pneumonia</i>	rhizosphere	10 ⁻⁵	96%	CPO14008-1
9	RHSJ	<i>Pseudomonas putida</i>	rhizosphere	10 ⁻⁵	90%	KRO58826-1
10	RHSK	<i>Klebsiella varriicola</i>	rhizosphere	10 ⁻⁵	92%	CPO10523-1
11	RHZO	<i>Pseudomonas monteilli</i>	rhizoplane	10 ⁻⁵	87%	DQ071557-1
12	RHZR	<i>Klebsiella pneumonia</i>	rhizoplane	10 ⁻³	93%	CPO10361-1
13	RHZV	<i>Bacillus cereus</i>	rhizoplane	10 ⁻³	84%	LN559106-1
14	RHZW	<i>Enterobacter asburiae</i>	rhizoplane	10 ⁻³	98%	CPO1262-1
15	RHSX	<i>Myroides odoratimimus</i>	rhizosphere	10 ⁻⁵	87%	CPO13690-1
16	RHSZ	<i>Bacillus cereus</i>	rhizosphere	10 ⁻³	80%	CPO09590-1

3.2 Molecular Identification of the PGPR

The amplification of the genomic DNA from the rhizobacterial isolates using the universal 16S primers and the yielded DNA fragments are shown in Plate 1. Based on BLAST analysis of the 16S rDNA gene homology, the isolates were identified as presented in Table 2. Only 10 of the isolates (63%) exhibited sequence homology level equal or greater than 90% as shown in the table. The sequence analysis of 16S rDNA sequences of isolates RHZA, RHZa, RHZb, RHSc, RHZD, RHZE, RHZc, RHSe, RHSJ, RHSK, RHZO, RHZR, RHZV, RHZW, RHSX, RHSZ showed maximum identity of 98% to *Bacillus thuringiensis* (CP009651-1), 95% to *Chryseobacterium spp* (CP007626-1), 98% to *Klebsiella pneumonia* (AP014624-1), 98% to *Proteus vulgaris* (CPO1267J-1), 86% to *Bacillus cereus* (CPO09605-1), 85% to *Proteus vulgaris* (LN558631-1), 97% to *Enterobacter spp* (CP005991.1), 96% to *Klebsiella pneumonia* (CPO14008-1), 90% to *Pseudomonas putida* (KRO58826-1), 92% to *Klebsiella varriicola* (CPO10523-1), 87% to *Pseudomonas monteilli* (DQ071557-1), 93% to *Klebsiella pneumonia* (CPO10361-1), 84% to *Bacillus cereus* (LN559106-1), 98% to *Enterobacter asburiae* (CPO1262-1), 87% to *Myroides odoratimimus* (CPO13690-1) and 80% to *Bacillus cereus* (CPO09590-1) respectively. Therefore, the isolates can be considered as strains of the listed bacteria.

This result is comparable to numerous studies that have reported the isolation of *Bacillus*

species (*B. thuringiensis* and *Bacillus cereus*), *Pseudomonas putida*, *Klebsiella pneumonia* and *Enterobacter* [25,26,22] from the rhizosphere of *Zea mays* and other crops. The experimental work eliminated the use of *Chryseobacterium spp.*, *Klebsiella pneumonia*, *Proteus vulgaris*, *B. cereus*, *Pseudomonas monteilli*, *Enterobacter asburiae* and *Myroides odoratimimus* for further work due to their pathogenic characteristics. Various opportunistic bacteria pathogens including the listed ones have been identified as colonizers of plant rhizosphere and also described as opportunistic human pathogens [35,36,37]. Due to the potential of the isolated PGPR as biofertilizers, three isolated PGPR namely; *Bacillus thuringiensis*, *Pseudomonas putida* and *Klebsiella varriicola* which are not likely to be opportunistic pathogens were selected for further work.

Although all tested strains excreted phytohormones in the different complex growth medium, the levels of IAA, GA, and cytokinin production differed among them (Table 3).

All the selected strains of PGPR were able to produce IAA (indole-3-acetic acid) and the amount of IAA produced varied among the bacteria isolates, complying with earlier studies [38,39] and [40] which have shown that IAA production is very common among PGPR. Production of IAA by PGPR is an important mechanism of plant growth promotion because IAA has been implied in the promotion of root

Table 3. Types and amount of Hormones produced by selected Plant growth promoting rhizobacteria

Microorganisms	Gibberelic acid (mg/L)	Indole acetic acid (mg/L)	Cytokinin (mg/L)
<i>Klebsiella varricola</i>	19.697	0.348	1.804
<i>Pseudomonas putida</i>	2.693	0.152	5.066
<i>Bacillus thuringiensis</i>	15.091	0.132	2.410

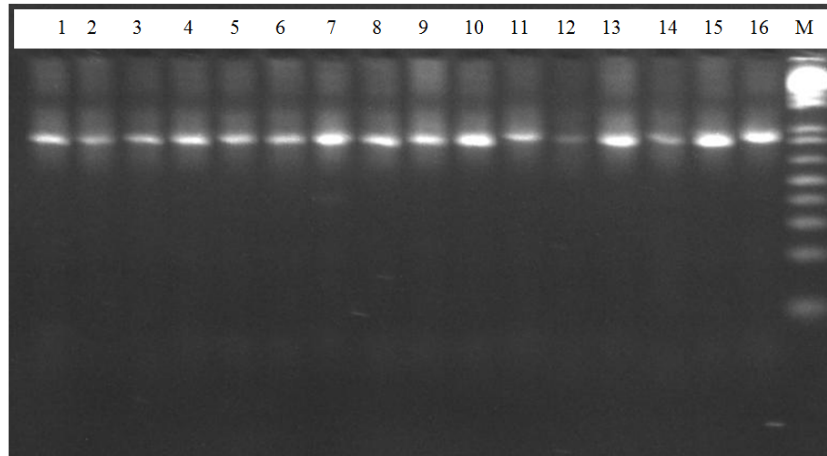


Plate 1. Agarose gel electrophoresis of DNA fragments specifically amplified from genomic DNA with 16S rDNA primers

Lane 1, *Bacillus thuringiensis* (CP009651-1); 2, *Chryseobacterium* spp (CP007626-1); 3, *Klebsiella pneumonia* (AP014624-1); 4, *Proteus vulgaris* (CPO1267J-1); 5, *Bacillus cereus* (CPO09605-1); 6, *Proteus vulgaris* (LN558631-1); 7, *Enterobacter* spp (CPO05991.1), 8 *Klebsiella pneumonia* (CPO14008-1) 9, *Pseudomonas putida* (KRO58826-1); 10, *Klebsiella varricola* (CPO10523-1); 11, *Pseudomonas montei* (DQ071557-1); 12, *Klebsiella pneumonia* (CPO10361-1); 13, *Bacillus cereus* (LN559106-1); 14, *Enterobacter asburiae* (CPO1262-1); 15, *Myroides odoratimimus* (CPO13690-1) and 16, *Bacillus cereus* (CPO09590-1)

development and uptake of nutrients [41]. The production of IAA from tryptophan amended bacterial cultures was confirmed by HPLC bioassay and quantification was done by comparison of peak heights. The amount of IAA produced by *Klebsiella varricola*, *Pseudomonas putida* and *Bacillus thuringiensis* was 0.348, 0.152 and 0.132 mg/L respectively indicating *Klebsiella varricola* as the most effective IAA producer amongst the tested bacterial strains.

Production of gibberellic acid by the isolates were estimated and confirmed on high-performance liquid chromatography (HPLC). *Klebsiella varricola* produced 19.697 mg/L solution of Gibberelic Acid (GA), *Pseudomonas putida* excreted 2.693 mg/L of GA while *Bacillus thuringiensis* produced 15.091 mg/L of GA. As observed in the production of IAA, maximum concentration of GA was also recorded by *Klebsiella varricola* while the lowest was recorded by *Pseudomonas putida*. Gibberellic acid improves plant growth through the promotion of primary root elongation and lateral root extension [42,43], and the production of

gibberellic acid by several PGPR has been documented [44,45,46].

The amount of cytokinin produced by the isolates also varied with a range of 1.804 to 5.066 mg/L. Cytokinins are important plant growth hormones [47], exogenous cytokinin enhances cell division rate in plants. The amount of cytokinin produced by *Pseudomonas putida*, *Klebsiella varricola* and *Bacillus thuringiensis* was 5.066 mg/L, 1.804 mg/L and 2.410 mg/L respectively. Earlier reports have also documented the ability of isolated PGPR to produce cytokinin [48,49,50]. In the present study it was evident that *Pseudomonas putida* was the most efficient cytokinin secreting bacteria among the strains studied while *Klebsiella varricola* produced the least amount of cytokinin.

4. CONCLUSION

It can be concluded that the screened PGPR isolated from the rhizoplane and rhizosphere soil of *Zea mays* were capable of producing some phytohormones. The screened PGPR showed

multiple plant growth promoting traits namely; indole acetic acid, gibberellic acid and cytokinin. However, *in vivo* screening of the PGPR as plant growth promoters is required for further confirmation. This is ongoing through greenhouse house and field trials to determine the potentialities of the PGPR as growth enhancers for development of biofertilizers. Further works will also confirm the suggestion that the PGPR might have been partly responsible for the ability of Low Nitrogen Tolerant Maize (LNTM) to grow optimally even when soil nitrogen is low. It is believed that development of PGPR into biofertilizer formulation will improve agricultural soil environment.

ACKNOWLEDGEMENT

The authors wish to acknowledge Institute of Agricultural Research and Training for providing the grant used for the execution of this research work.

COMPETING INTERESTS

Authors have declared that no competing interests exist.

REFERENCES

- Damam M, Kaloori K, Gaddam B, Kausar R. Plant growth promoting substances (Phytohormones) produced by rhizobacterial strains isolated from the rhizosphere of medicinal plants. *International Journal of Pharmaceutical Sciences Review and Research*. 2016;37(1):130-136.
- Lugtenberg, Ben JJ, Dekkers, Linda; Bloemberg, Guido V. "Molecular determinants of rhizosphere colonization by *Pseudomonas*" (PDF). *Annual Review of Phytopathology*. 2001;39:461–490. DOI:10.1146/annurev.phyto.39.1.461.
- Egamberdieva D, Kucharova Z, Davranov K, Berg G, Makarova N, Azarova T, Chebotar V, Tikhonovich I, Kamilova F, Validov Sh. Lugtenberg B. Bacteria able to control foot and root rot and to promote growth of cucumber in salinated soils. *Biology and Fertility of Soils*. 2010;47: 197–205.
- Vessey J, Kevin A. Plant growth promoting rhizobacteria as biofertilizers. *Plant and Soil*. 2003;255(2):571–586. DOI:10.1023/A:1026037216893. ISSN 0032-079X.
- Anandaraj M, Dinesh R. Use of microbes for spices production. V.A. Parthasarathy, K. Kandiannan, V. Srinivasan (Eds.), *Organic spices*, New India Publishing Agency, New Delhi. 2008;101-132.
- Glick BR. The enhancement of plant growth by free-living bacteria. *Canadian Journal of Microbiology*. 1995;41(2):109–117. DOI:10.1139/m95-015. ISSN 0008-4166.
- Rodríguez H, Fraga R. Phosphate solubilizing bacteria and their role in plant growth promotion. *Biotechnology Advances*. 1999;17:319–339.
- Podile AR, Kishore GK. Plant growth-promoting rhizobacteria. In: Gnanamanickam SS, editor. *Plant-Associated Bacteria*. Springer; Netherlands. 2006;195–230.
- Güneş A, Ataoğlu N, Turan M, Eşitken A, Ketterings QM. Effects of phosphate-solubilizing microorganisms on strawberry yield and nutrient concentrations. *Journal of Plant Nutrition and Soil Science*. 2009;172(3):385-392.
- Yildirim E, Turan M, Ekinçi M, Dursun A, Gunes A, Donmez M. Growth and mineral content of cabbage seedlings in response to nitrogen fixing rhizobacteria treatment. *Romania Biotechnology Letters*. 2015;20(6):10929-10935.
- Cakmakci R, Turan M, Gulluce M, Sahin F. Rhizobacteria for reduced fertilizer inputs in wheat (*Triticum aestivum* spp. vulgare) and barley (*Hordeum vulgare*) on Aridisols in Turkey. *International Journal of Plant Production*. 2014;8(2):163-182.
- Amir HG, Shamsuddin ZH, Halimi MS, Ramlan MF, Marziah M. Effects of *Azospirillum* inoculation on N₂ fixation and growth of oil palm plantlets at nursery stage. *Journal of Oil Palm Research*. 2001;13(1):42-49.
- Farzana Y, Radziah O, Kamaruzaman S, Saad MS. Effect of PGPR inoculation on growth and yield of sweet potato. *J. Biol. Sci*. 2007;7:421-424.
- Stefan M, Munteanu N, Stoleru V, Mihasan M. Effects of inoculation with plant growth promoting rhizobacteria on photosynthesis, antioxidant status and yield of runner bean. *Romanian Biotechnological Letters*. 2013;18(2):8132-8143
- Korir H, Mungai NW, Thuita M, Hamba Y, Masso C. Co-inoculation effect of rhizobia

- and plant growth promoting rhizobacteria on common bean growth in a low phosphorus soil. *Front. Plant Sci.* 2017;8:141.
16. Gray WM. Hormonal regulation of plant growth and development. *PloS Biol.* 2004;2:1270-1273.
 17. Van Loon LC. Plant responses to plant growth-promoting rhizobacteria. *Eur J Plant Pathol.* 2007;119:243-254.
 18. Patten CL, Glick BR. Role of *Pseudomonas putida* indole acetic acid in development of the host plant root system. *Appl Environ Microbiol.* 2002;68(8):3795–3801. DOI: 10.1128/AEM.68.8.3795-3801.2002.
 19. Khalid A, Arshad M, Zahir ZA. Screening plant growth-promoting rhizobacteria for improving growth and yield of wheat. *J. Applied Microbiol.* 2004;96:473-480.
 20. Martin RF, Domenech C, Olmedo EC. Ent-Kaurene and squalene synthesis in *F. fujikuroi* cell-free extracts. *Phytochemistry.* 2000;54:723-728.
 21. Elezar M, Escamilla S. Optimization of GA3 production by immobilized *G. fujikuroi* mycelium in fluidized bioreactors. *Journal of Biotechnology.* 2000;76:147-155.
 22. Holt JG, Krieg NR, Sneath PHA, Staley JT, Williams ST. Bergy's manual of determinative bacteriology (Ninth ed), Williams and Wilkins Pub., MD, USA; 1994.
 23. Hasnain S, Thomas CM. Two related rolling circle replicating plasmids from salt-tolerant bacteria. *Plasmid.* 1996;36:191-199.
 24. Rahman Atiqur, Sitepu Irnayuli R, Tang Sui-Yan, Hashidoko Yasuyuki. Salkowski's. Reagent test as a primary screening index for functionalities of rhizobacteria isolated from wild dipterocarp saplings growing naturally on medium-strongly acidic tropical peat soil. *Biosci Biotechnol Biochem.* 2010;74:2202–2208.
 25. Hussain A, Hasnain S. Cytokinin production by some bacteria: Its impact on cell division in cucumber cotyledons. *African Journal of Microbiology Research.* 2009;3(11):704-712.
 26. Cho KY, Sakurai A, Kamiya Y. Effects of the new plant growth retardants of quaternary ammoniumiodides on gibberellin biosynthesis in *Gibberella fujikuroi*. *Plant Cell Physiol.* 1979;20:25-81.
 27. Hynes RK, Leung GC, Hirkala DL, Nelson LM. Isolation, selection, and characterization of beneficial rhizobacteria from pea, lentil and chickpea grown in Western Canada. *Can. J. Microbiol.* 2008;54:248–258.
 28. Ashrafuzzaman M, Hossen FA, Razi Ismail M, Hoque MA, Zahurul Islam M, Shahidullah SM, Meon S. Efficiency of plant growth-promoting rhizobacteria (PGPR) for the enhancement of rice growth. *Afr J Biotechnol.* 2009;8:1247–1252.
 29. Dinesh R, Anandaraj M, Kumar A, Bini YK, Subila KP, Aravind R. Isolation, characterization and evaluation of multi-trait plant growth promoting rhizobacteria for their growth promoting and disease suppressing effects on ginger. *Microbiology Research.* 2015;173:34-43.
 30. Islam S, Akanda AM, Prova A, Islam MT, Hossain MM. Isolation and identification of plant growth promoting rhizobacteria from cucumber rhizosphere and their effect on plant growth promotion and disease suppression. *Frontiers in Microbiology.* 2016;6:1360.
 31. Farooq L, Bano A. Screening of indigenous bacteria from rhizosphere of maize (*Zea mays* L.) for their plant growth promotion ability and antagonism against fungal and bacterial pathogens. *The Journal of Animal and Plant Sciences.* 2013;23(6):1642-1652.
 32. Bumunang EW, Babalola OO. Characterization of rhizobacteria from field grown genetically modified (GM) and non-GM maizes. *Brazilian Archives of Biology and Technology.* 2014;57:1–8.
 33. Agbodjato NA, Noumavo PA, Baba-Moussa F, Salami HA, Sina H, Sèzan A, Bankolé H, Adjanohoun A, Baba-Moussa L. Characterization of potential plant growth promoting rhizobacteria isolated from maize (*Zea mays* L.) in central and Northern Benin (West Africa). *Applied and Environmental Soil Science.* 2015;1-9.
 34. Adjanohoun A, Baba-Moussa L, Kakai R. Caractérisation des rhizobactéries potentiellement promotrices de la croissance végétative du maïs dans différents agrosystèmes du Sud-Bénin. *International Journal of Biological and Chemical Sciences.* 2015;5(2):433–444.
 35. Berg G, Eberl L, Hartmann A. The rhizosphere as a reservoir for opportunistic human pathogenic bacteria. *Environmental Microbiology.* 2005;7:1673–1685.

36. Tyler HL, Triplett EW. Plants as a habitat for beneficial and/or human pathogenic bacteria. *Annual Review of Phytopathology*. 2008;46:53–73.
37. Mendes R, Kruijt M, de Bruijn I, Dekkers E, van der Voort M, Schneider JHM, Piceno YM, DeSantis TZ, Andersen GL, Bakker PAHM, Raaijmakers JM. Deciphering the rhizosphere microbiome for disease-suppressive bacteria. *Science*. 2011;332:1097–1100.
38. Yasmin S, Bakar MAR, Malik KA, Hafeez FY. Isolation, characterization and beneficial effects of rice associated plant growth promoting bacteria from Zanzibar soils. *J. Basic Microbiol*. 2004;44:241–252.
39. Ahemad M, Mohammad SK. Plant growth promoting activities of phosphate-solubilizing *Enterobacter asburiae* as influenced by fungicides. *EurAsian Journal of BioScience*. 2010;4:88-95.
40. Banerjee S, Palit R, Sengupta C, Standing D. Stress induced phosphate solubilization by '*Arthrobacter*' sp. and '*Bacillus*' sp. isolated from tomato rhizosphere. *Aust. J. Crop. Sci*. 2010;4:378–383.
41. Carrillo AE, Li CY, Bashan Y. Increased acidification in the rhizosphere of cactus seedlings induced by *Azospirillum brasilense*. *Naturwissenschaften* 2002;89:428–432.
DOI: 10.1007/s00114-002-0347-6
42. Fulchieri M, Lucangeli C, Bottini R. Inoculation with *Azospirillum lipoferum* affects growth and gibberellin status of corn seedling roots. *Plant Cell Physiology*. 1993;34:1305–1309.
43. Yaxley JR, Ross JJ, Sherriff LJ, Reid JB. Gibberellin biosynthesis mutations and root development in pea. *Plant Physiology*. 2001;125:627–633.
44. Gutierrez-Manero FJ, Ramos-Solano B, Probanza A, Mehouchi J, Tadeo FR, Talon M. The plant growth-promoting rhizobacteria *Bacillus licheniformis* produce high amounts of physiologically active gibberellins. *Physiologia Plantarum*. 2001;111:206-211.
45. Karakoc F, Aksoz N. Some optimal cultural parameters for gibberellic acid biosynthesis by *Pseudomonas* sp. *Turkish Journal of Biology*. 2006;30:81-85.
46. Dodd IC, Zinovkina NY, Safronova VI, Belimov AA. Rhizobacterial mediation of plant hormone status. *Annals of Applied Biology*. 2010;157:361–379.
47. Cecchetti V, Altamura MM, Serino GM, Pomponi FG, Costantino P, Cardarelli M. ROX1, a gene induced by rolB, is involved in procambial cell proliferation and xylem differentiation in tobacco stamen. *Plant Journal*. 2007;49(1):27–37.
48. Muller M, Diegele C, Ziegler H. Hormonal interactions in the rhizosphere of maize (*Zea mays*) and their effects on plant development. *Z. Pflanzenernaehr. Bodenkd*. 1988;152:247–254.
49. García de Salamone IE, Hynes RK, Nelson LM. Cytokinin production by plant growth promoting rhizobacteria and selected mutants. *Canadian Journal of Microbiology*. 2001;47(5):404-411.
50. Sabat S, Shantha SL, Murthy KV. Study of microbial cytokinin production under various enriched conditions and its effect on plant growth. *International Journal Fundamental and Applied Sciences*. 2013;2:12–15.

© 2017 Taiwo et al.; This is an Open Access article distributed under the terms of the Creative Commons Attribution License (<http://creativecommons.org/licenses/by/4.0>), which permits unrestricted use, distribution, and reproduction in any medium, provided the original work is properly cited.

Peer-review history:
The peer review history for this paper can be accessed here:
<http://sciencedomain.org/review-history/21319>